

WILD WILD WEST SIMMENTAL SALE



Tuesday, January 22, 2013 • 6:30 pm

**Following the Bull show • Adams County Regional Park
During the Denver National Western Stock Show Simmental events**



WILD WILD WEST



Sale Day Phone (970) 481-2570
Doug Parke (859) 421-6100

Tuesday, January 22, 2013 • 6:30 pm MST

Adams County Regional Park • Brighton, Colorado
During the Denver National Western Stock Show Simmental events
Cattle available for viewing Saturday, Sunday & Monday

Auctioneer

Tracy Harl, Trumbull, Neb. (402) 743-2289

Sale Consultants

Doug Parke, **DP** (859) 987-5758 • (859) 421-6100, cell
Drew Hatmaker, (423) 506-8844, cell
Bob Volk (402) 720-0469, cell
Dalton Lundy (502) 727-6898, cell
Don Fischer (816) 392-8771, cell
Jim Suver (402) 690-7354, cell
Jeremy Ruble (406) 581-7940, cell

Livestock Publication Rep. & Ringmen

Steve Sellers, EDJE Technologies (770) 957-6145, cell
Ed Creason, ASA Area Representative (573) 823-5635, cell
Will Townsend, ASA Area Representative (406) 548-5770, cell
Luke Keller, ASA Area Representative (406) 599-2394, cell

Mail or Phone Bid

Doug Parke, **DP** (859) 421-6100 • (859) 987-5758
e-mail: pleent@aol.com

Sale Headquarters

Double Tree Hotel (303) 321-3333

EPDs Fall 2012

Fall 2012 American Simmental Association EPDs are included in this catalog

Sale Terms & Conditions of the American Simmental Assoc.

Livestock Insurance

Available at sale clerk desk

Jamie Secondino (812) 208-0956

Transportation

Denver International Airport – Denver

Bus from stock show grounds to sale – see information on next page.

Trucking Available

We will help you with your trucking needs!

Mark Howard, Jamestown, Tn. (865) 300-3636
Brent Williams, Bovine Bus (812) 453-7548

Special Guest

Marty Ropp, Allied Genetic Resources (406) 581-7835

Selling 57 Lots

- ★ Open and Bred, Black & Red female lots!
- ★ Ranch Raised “Bred to be Cows” Show Prospects!
- ★ Ranch Ready – Not Highly Fitted
- ★ Select Embryo Lots

WANTED

ALTENBURG SUPER BALDY RANCH, LLC

Willie and Sharon Altenburg
570 E. County Rd. 64 • Fort Collins, Colorado 80524
(970) 568-7792 • (970) 481-2570 cell
Bruce German, manager • (720) 982-8541

BRIDLE BIT SIMMENTALS

Erroll, Chad, Brent and Brad Cook
Box 507 • Walsh, Colorado 81090
(719) 324-5542, home • (719) 324-5474, home • (719) 324-0126 fax
Chad, (719) 529-0564 & Erroll, (719) 529-0087, cell

COW CAMP RANCH

Kent, Mark, and Nolan Brunner
3553 Upland Road • Lost Springs, KS 66859
(785) 983-4483, office
(785) 466-6475, Kent • (785) 258-0173, Mark
(785) 466-1129, Nolan

CAMPBELL SIMMENTAL

Robert, Christy and Katie Campbell
1465 CR 336 • Ignacio, Colorado 81137
(970) 563-9070 or (970) 749-9708, Robert cell

OVAL F RANCH

Don & Marilyn Fischer • Winston, MO
Matt & Andrea Fischer • St Joseph, MO
(816) 392-8771, Don • (816) 383-0630, Matt

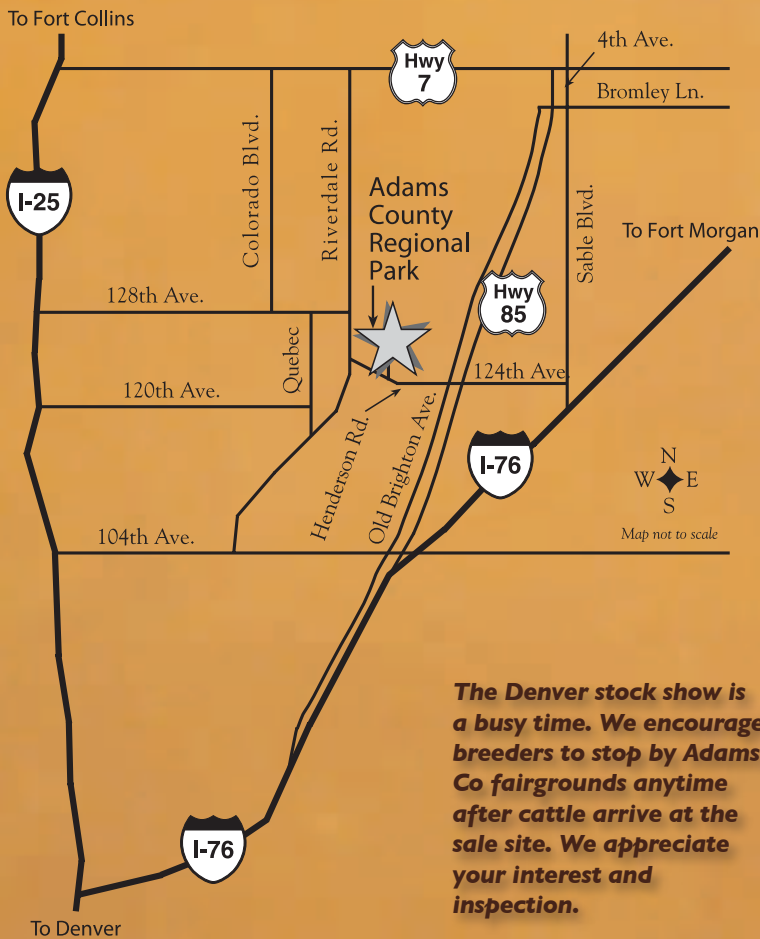
ROCK CREEK RANCH

Jim & Jean Houck • Allen, KS
Jeff & Lori Houck • Americus, KS
(620) 443-5700, Jim • (620) 443-5751, Jeff

COLORADO SIMMENTAL ASSOCIATION

BDK Simmentals
Ahlberg Simmentals

SIMMENTAL SALE



The Denver stock show is a busy time. We encourage breeders to stop by Adams Co fairgrounds anytime after cattle arrive at the sale site. We appreciate your interest and inspection.

Directions from National Western Stock Show

- ☆ Take the I-70 west ramp, merge onto I-70 west.
- ☆ Take the I-25 north exit, exit #274, toward Fort Collins, merge onto I-25 north
- ☆ Take the I-76 east exit, exit #216A, towards Fort Morgan, merge onto I-76 east
- ☆ Take the US-85 north exit, exit #12, on the left toward Brighton/Greeley, merge onto US-85 north.
- ☆ Turn west onto E 124th Ave. 124th Ave. becomes Henderson Rd. to Adams County Regional Park.

Bus Transportation from National Western Stock Show grounds to the WILD WILD WEST SALE.

There will be two departures:

3:30 pm and 4:30 pm or following the National Western Stock Show Simmental bull show.

Please sign up at the Colorado Simmental Association booth before noon on Tuesday, January 22, 2013.

“Welcome to the 2013 Wild Wild West!” We are pleased to host another outstanding sale offering. These are honest cattle, “bred to be cows”... backed by cattle people who breed them to work in some of the harshest range conditions in North America. It proves the Simmental and SimGenetics females can work in any environment. And the Wild Wild West sale showcases our breeding programs.

Come look us up in the yards. Several Wild Wild West consignors will be exhibiting in the female Simmental Pen Show. The female pen show is Monday, January 21st., with the One Sale that evening. The bulls show is Sunday January 20th.

The Colorado Simmental Association works hard to make the National Western Stock Show Simmental events a reality. They are a small, but mighty group! Almost single handily, they put on the National Western Stock Simmental Show. So to help defray some of those costs, the Wild Wild West will donate the Lot 1 semen tank and semen donation proceeds. We appreciate your support of this lot!

Denver will again be the home of the American Simmental Association Annual Meeting. You will want to come and take part of the business of our breed. We look forward to seeing you at the annual meeting and all the Denver Simmental events.

We appreciate all our past buyers and look forward to seeing you back at this year's sale during the National Western Stock Show. Adams County Fairgrounds is only a few extra miles from the Denver grounds, but it is worth the effort and the trip.

Call any of the consignors, Doug Parke, Drew Hatmaker or ASA Field Representatives for additional questions regarding the Wild Wild West consignments. We look forward to seeing you the evening of Tuesday, January 22nd, 2013 at the “Wild Wild West”.

Altensburg Super Baldy Ranch, LLC, Colorado
Bridle Bit Simmental, Colorado
Carstens Simmental, Colorado
Cow Camp Ranch, Kansas



We use Ritchey ear tags of Brighton, Colorado, for sale lot tags. Thanks for their support. (800) 327-8247



Catalog Produced By:

EDGE
technologies

On the Leading Edge of Innovation. 888.828.3247





W/C Wide Track



Uno Mas



GW Paramount 718Y



ASR/GLS Pacesetter



GW Predestined 701T



ASR Little Bear L126

1

The Wild Wild West consignors would like to donate the proceeds of lot #1 in support of the Colorado Simmental Association! The Wild Wild West consignors, CHART Manufacturing and semen companies would like to support the Colorado Simmental Association this donation of semen and tank.

- * 10 Straws of W/C Wide Track ISM0131 ASA# 2588250 (3C W/C Right Track x PVF-SSH Liberty)
EPDs 9 • 2.4 • 75 • 115 • 11 • 20 • 57 • 19 • 32.9 • -0.29 • 0.28 • -0.06 • 0.83 • 127 • 75
Donated by Genex Cooperative, Shawano, WI
- * 10 Straws of GW Paramount 718Y 29SM04403 ASA# 2605931 (GW Predestined x GW Lucky Strike)
EPDs 20 • -3.9 • 60 • 102 • 17 • 29 • • 59 • 25.4 • -0.23 • 0.75 • 0.01 • 1.08 • 187 • 91
Donated by ABS Global, De Forest, WI
- * 10 Units of Uno Mas 7SM65 ASA #2532016 (Dream On x Goldmine)
EPDs 15 • 0.4 • 63 • 83 • 11 • 18 • 49 • 24 • 10.7 • -0.32 • 0.25 • -0.05 • 0.71 • 140 • 69
Donated by Cache Valley Select Sires, Logan, UT
- * 10 Straws of ASR/GLS Pacesetter U862 90SM1716 ASA# 2445038 (Hooks Pacesetter X HC Hummer)
EPDs 13 • -0.7 • 56 • 91 • 14 • 27 • 55 • 19 • 14.9 • -0.39 • 0.22 • -0.01 • 1.31 • 128 • 68
Donated by Benda Simmental, SD and Altenburg Super Baldy Ranch LLC, CO
- * 10 Straws of Better Than Ever 59SM204 ASA# 2399920 (Mo Better x Legacy)
EPDs 11 • 0.1 • 49 • 71 • 6 • 22 • 46 • 22 • 4.0 • -0.34 • 0.02 • -0.07 • 0.55 • 115 • 56
Donated by Grass-Lunning Simmental, MN, Hecksel Simmental, MN, Pine Ridge Simmentals, GA, Altenburg Super Baldy Ranch LLC, CO
- * 10 Straws of SDS In Force 112Y ASA# 2593861 (Shearforce x Mytty In Focus)
EPDs 22 • -3.6 • 67 • 102 • 12 • 27 • 60 • • 16.5 • -0.30 • 0.79 • -0.02 • 0.96 • 190 • 95
Donated by Gibbs Farms, Rathburne, GA, Cow Camp Ranch, Lost Springs, KS, Select Sires, OH
- * 10 Straws of ASR Little Bear L126 59SM165 ASA# 2109389 (WHF Desperado x Big Sky)
EPDs 13 • -1.3 • 60 • 86 • 15 • 26 • 56 • 19 • 18.9 • -0.27 • 0.12 • -0.05 • 0.56 • 123 • 67
Donated by Altenburg Super Baldy Ranch, LLC, CO
- * 10 Straws of GW Predestined 701T 14SM03061 ASA# 2414537 (GAR Predestine x GW Lucky Strike)
EPDs 16 • -3.0 • 63 • 101 • 16 • 24 • 56 • • 17.0 • -0.25 • 0.88 • -0.01 • 0.93 • 180 • 94
Donated by Accelerated Genetics, Westby, WI
- * 10 Straws of LRS Megawatt 77X ASA# 2571590 (Ellingson Legacy "Olie" x ES Kilowatt)
EPDs 9 • 4.8 • 81 • 124 • 10 • 18 • 58 • 22 • 42.1 • -0.37 • 0.01 • -0.08 • 1.04 • 118 • 69
Donated by Rock Creek Ranch, Kansas
- * 2 Frozen Embryos by Sand Ranch Hand (ASA# 2290140) x Bridle Bit Miss S623 (ASA# 2344228)
by BF CK Cherokee CNYN – Full Sib to Lot 10
PROJ EPDs 10 • 0.4 • 65 • 95 • 9 • 21 • 54 • • 22.4 • -0.40 • 0.07 • -0.08 • 0.92 • 113 • 68
Donated by Bridle Bit Simmental, Walsh, CO



Thank you CHART for donating a model MVE Millennium 2000 XC 20

BRIDLE BIT SIMMENTALS

Erroll Cook & Sons

Box 507 • Walsh, CO 81090

(719) 529-0564 • (719) 529-0087 • (719) 324-5474

kcdc1@centurytel.net



Bridle Bit Simmentals (ASA#4086) is headquartered in extreme southeastern Colorado where the grass is short and the rain is seldom. Established in 1969 near Fort Collins, Colorado, Erroll and Gayle bred their first cows to Simmental bulls. Today, 100 pair are managed using all data collection offered by the American Simmental Association. Data has been collected on every calf born since the beginning, as proven by our Performance Advocate score.

All years begin with calving season starting in February, where two and three year olds are kept on separate grass pasture from the rest of the herd. They are supplemented with feedstuff, such as silage, corn stalk bales, and dried distillers grain. Bridle Bit works closely with the local veterinarian to stay on the cutting edge of all herd health and vaccination protocol.

After AI season, bull calves and their dams are rotated on native grass with mineral being the only supplement, and heifer calf pairs are placed on leased CRP grass.

Calves are weaned sometime in the month of October depending on the amount of moisture and the condition of the

grass. All calves are weaned at the same time to keep data from being compromised.

Weaned calves are sorted into three pens, bulls, replacement females, and fats. All calves are fed side by side with all yearling data collected, except for Wild Wild West sale animals. Bulls and replacement females are scanned as yearlings, while the fats are harvested in June and carcass data is collected.

Bridle Bit Simmentals is truly a family operation with the help of father/grandpa, sons, wives, and grandkids. We all really miss Gayle who passed away in March of 2011 to breast cancer, but look forward to March of 2013 when Brad will marry Kristen Wood and they begin their life together.

We trust you will find our females worth your time and consideration. All offerings have tested negative for PI-BVD. Thank you and see you in Denver!

"The Bridle Bit Gang"



Bridle Bit Miss Y190

Polled 3/4 Blood Heifer

ASA# 2579861

Tattoo: Y190

Born: 3-11-11

TJF Lucky Jess J224

Bridle Bit Mr U863

Bridle Bit Miss F619

Three Trees Primecut 0145

Bridle Bit Miss R505

Bridle Bit Miss K023

MGGS: Black irish Kansas

CE	9	CW	32
BW	2.2	YG	-0.26
WW	65	MB	0.25
YW	98	BF	-0.05
MCE	9	REA	0.73
MM	22	API	115
MWW	55	TI	67

AI bred to HTP SVF In Dew Time, ASA# 2285555 on 5-06-12

Proj. EPD 11 1.5 64 90 12 17 49 • 20.9 -0.21 0.31 0.62 129 69

The pick of our bred heifers this year; Y190 is one of two lots sired by our herd bull that is out of the great donor F619. She has been represented in the WWW Sale every year since its inception. Montana and Y190 was named champion breeding female at our county fair this summer. Her purebred In Dew Time calf should be a good one.

Double Polled, Homozygous Black



Selling Choice of Z217, Z259 and Z271



3A

Bridle Bit Mr Z217

Polled Purebred Bull

ASA# 2644857

Tattoo: Z217

Born: 1-30-12

Homozygous Polled, Homozygous Black

Mr NLC Upgrade U8676	Ellingson Legacy M229	CE 12	CW 38
	Ms NLC Mojo S6119 B	BW 0.7	YG -0.45
Bridle Bit Miss U817	SS Goldmine L42	WW 79	MB 0.15
	Bridle Bit Miss S678	YW 114	BF -0.10
	MCE 11	REA 1.09	
	MM 12	API 129	
	MWW 51	TI 76	
MGGs: SS Goldmine L42			



3B

Bridle Bit Mr Z259

Polled 3/4 Blood Bull

ASA# 2644829

Tattoo: Z259

Born: 2-13-12

Homozygous Polled, Heterozygous Black

Mr NLC Upgrade U8676	Ellingson Legacy M229	CE 11	CW 32
	Ms NLC Mojo S6119 B	BW -0.5	YG -0.20
Bridle Bit Miss S625	BFCk Cherokee Cnyn 4912	WW 76	MB 0.40
	Bridle Bit Miss P414	YW 107	BF -0.04
	MCE 11	REA 0.69	
	MM 7	API 141	
	MWW 45	TI 86	
MGGs: STF Much More K300			



3C

Bridle Bit Mr Z271

Polled 3/4 Blood Bull

ASA# 2644883

Tattoo: Z271

Born: 2-24-12

Homozygous Polled, Homozygous Black

Mr NLC Upgrade U8676	Ellingson Legacy M229	CE 12	CW 57
	Ms NLC Mojo S6119 B	BW 0.7	YG -0.25
Bridle Bit Miss W923	Mytty In Focus	WW 90	MB 0.49
	Bridle Bit Miss R541	YW 144	BF -0.06
	MCE 13	REA 1.00	
	MM 11	API 153	
	MWW 56	TI 97	
MGGs: Nichols Legacy G151			

Selling Choice of Z217, Z259 or Z271

Each year we kick off our private treaty bull sales around WWW Simmental Sale time. This year we are bringing three Upgrade sons and selling choice. Upgrade sons sorted their way to the top this fall and we are excited to bring three of them to Denver. Take a look at the EPD's on these bulls. They combine calving ease and growth as well as any group of bulls you will find. All studs call these kinds of bulls curve benders. Carcass traits are another positive to each bull. These bulls are truly herd sire prospects. Feel free to call Chad Cook at 719-529-0564 to discuss the 50K DNA testing that has been done on each bull. Selling choice and retaining 1/4 semen interest. All other Bridle Bit bulls will be for sale beginning February 1 at the ranch. Information on other bulls is available upon request.

4

Bridle Bit Miss Z214

Polled Purebred Heifer

ASA# 2644812

Tattoo: Z214

Born: 1-29-12

Dikemans Double Down 26W	Dikemans Sure Bet	CE	5	CW	15
Natasha 10N		BW	2.5	YG	-0.22
		WW	59	MB	0.36
		YW	84	BF	-0.03
Bridle Bit Miss W961	Triple C Invasion R47K	MCE	6	REA	0.64
		MM	27	API	123
	Bridle Bit miss K089	MWW	56	TI	67

MGGS: Bridle Bit Mr H823

Double Down injected some growth into Z214's pedigree, which is just what we wanted. She indexed 102 at birth and 100 at weaning.

Double Polled, Homozygous Black**5**

Bridle Bit Miss Z222

Polled Purebred Heifer

ASA# 2644868

Tattoo: Z222

Born: 1-30-12

Sand Ranch Hand	Wheatland Bull 131L	CE	11	CW	-0.8
		BW	-1.6	YG	-0.44
	Sand Lucky Charmer	WW	53	MB	0.02
		YW	68	BF	-0.10
Bridle Bit Miss P468	SS Goldmine L42	MCE	12	REA	0.58
		MM	24	API	122
	Bridle Bit Miss K034	MWW	50	TI	61

MGGS: Rains Limit Up

Ranch Hand has been our feature sire for a few years. Y222 is very sound in her structure along with being an attractive female. This is the third daughter to sell in the WWW Simmental Sale out of her Gold Mine Dam.

Double Polled, Homozygous Black**6**

Bridle Bit Miss Z230

Polled Purebred Heifer

ASA# 2644852

Tattoo: Z230

Born: 2-01-12

Sand Ranch Hand	Wheatland Bull 131L	CE	7	CW	21.9
		BW	2.9	YG	-0.42
	Sand Lucky Charmer	WW	65	MB	0.27
		YW	95	BF	-0.09
Bridle Bit Miss S691	GW Lucky One 686K	MCE	12	REA	0.85
		MM	22	API	123
	Bridle Bit Miss G743	MWW	55	TI	69

MGGS: Burns Bull X339U

Cow Power: A true brood cow offering. Seed stock producers that sell bulls should like this female. Rock solid carcass EPDs are very important to our operation.

Double Polled, Homozygous Black



7 Bridle Bit Miss Z239

Polled 5/8 Blood Heifer
ASA# 2644837 **Tattoo:** Z239 **Born:** 2-05-12

TJF Lucky Jess J224

Bridle Bit Mr U863
 Briel Bit Miss F619

Bridle Bit Miss U805
 Bon View New Design 878
 Bridle Bit Miss S608

CE	10.2	CW	9
BW	2.2	YG	-0.23
WW	54	MB	0.43
YW	75	BF	-0.05
MCE	10	REA	0.40
MM	25	API	120
MWW	52	TI	61

MGGS: SS Goldmine L42

This is another deep-bodied, big-topped percentage heifer out of our Lucky Jess herd sire. We like his calves so much that we mate a number of cows to him each year.
Double Polled, Homozygous Black



8 Bridle Bit Miss Z243

Polled 1/2 Blood Heifer
ASA# 2644892 **Tattoo:** Z243 **Born:** 2-06-12

SAV Final Answer 0035

TNT Tuition U238
 TNT Miss S68

Bridle Bit Miss X007
 Mytty In Focus
 Bridle Bit Miss S608

CE	13.4	CW	22.1
BW	0.4	YG	-0.09
WW	66	MB	0.79
YW	101	BF	-0.02
MCE	7	REA	0.40
MM	23	API	151
MWW	56	TI	84

MGGS: SS Goldmine L42

Look at this EPD jackpot! This half-blood Tuition daughter has the ability to be a foundation female in any herd. Structure, rib shape, and thickness describes Z243. She does not appear to be a junior project at this time.
Double Polled, Homozygous Black



9 Bridle Bit Miss Z251

Polled 3/4 Blood Heifer
ASA# 2644845 **Tattoo:** Z251 **Born:** 2-09-12

Ellingson Legacy M229

Mr NLC Upgrade U8676
 Ms NLC Mojo S6119 B

Bridle Bit Miss U820
 Bon View New Design 878
 Bridle Bit Miss S615

CE	12.6	CW	33
BW	1.8	YG	-0.26
WW	77	MB	0.45
YW	117	BF	-0.06
MCE	13	REA	0.74
MM	20	API	146
MWW	59	TI	83

MGGS: GW Lucky One 686K

Another offering with outstanding numbers, this heifer puts it all together. She is our kind of female being moderately framed, correct in her structure, and wide topped.
Double Polled, Homozygous Black



10 Bridle Bit Miss Z265

Polled 3/4 Blood Heifer
ASA# 2644865 **Tattoo:** Z265 **Born:** 2-17-12

Wheatland Bull 131L

Sand Ranch Hand
 Sand Lucky Charmer

Bridle Bit Miss S623
 BFCK Cherokee Cnyn 4912
 Bridle Bit Miss K023

CE	10	CW	18
BW	0.3	YG	-0.41
WW	65	MB	0.06
YW	95	BF	-0.08
MCE	9	REA	0.92
MM	21	API	113
MWW	54	TI	69

MGGS: Black Irish Kansas

This is an example of a flush that really worked. Z265 is a blazed-face embryo transfer heifer out of Ranch Hand and one of our best half-blood Cherokee Canyon daughters. We can't say enough about this female. She will be a top lot sale day. Look for two full sibling frozen embryos in the VVVV donation lot #1.
Double Polled, Heterozygous Black



ALTENBURG SUPER BALDY RANCH, LLC

Willie and Sharon Altenburg • (970) 568-7792 • (970) 481-2570, cell

Bruce German, manager • (720) 982-8541, cell

570 East County Road 64 • Fort Collins, CO 80524



Willie and Sharon Altenburg

Altenburg Super Baldy Ranch is located in northern Colorado and has been operating there for the past nearly 40+ years. Altenburg's emphasis is producing commercially oriented bulls for western bull customers. We utilize both Simmental and Angus genetics Red and Black. Simmental is utilized for adding growth and yield. Angus is used for calving ease and to add carcass quality. Both breeds have exceptional maternal traits, making the SimAngus females the most sought after cross in the industry. The resulting SimAngus – "Super Baldy" bulls are utilized by producers wanting just a little continental blood or to stabilize a crossbreeding program. We sell 100+ bulls and will hold our 21st annual Super Baldy Bull sale the 16th of March in 2013. Our cattle are summered at 6 – 7000 feet in "short grass" country requiring 20 acres per cow in the summer. Cows are "trailed" the 12 miles from the ranch each year. Cows are wintered on hay stubble, and corn stalks and calved outside. We try to run them as our commercial customers do. Both A.I. and embryo transfer are utilized to make improvements in genetic progress. Please go to our website and learn more about our program www.altenburgsuperbaldy.com

We are so pleased with our commercial bull buyers and the breeders who have purchased seedstock from our program. Many thanks to TNT Simmental, ND, Hart Farms, SD, Gordon Hodges, SC, Wayward Hills Farms, KY, Gail & Jim Ligon, TN, Rains Black Simmental, KS,

Dixon Simmental, KS, Benda Simmental, SD, Eichacker, SD, Bonnydale Simmental, Western Australia, Hook Farms, MN, Grass Simmental, MN and I'm sure we have missed others. We are proud of the faith these breeders have placed in our program over the years.

We have been a part of the Wild Wild West Sale since its inception and are proud to be a Wild Wild West member. This group of western cattlemen has enjoyed bringing sound, useful cattle that will work in range conditions when you take them home. We say they are "bred to be cows". Many will work for show heifers, and youth projects, but ultimately, they will become productive cows.

We have tried to include video of many of this year's Wild Wild West consignments. Go to our Altenburg Super Baldy Facebook page and see the U-Tube video of these heifers.

We are pleased to have Bruce German as the cattle manager of our operation. Many of you know Bruce as past Colorado Simmental Association President

And finally, we value the National Western Stock Show and the Wild Wild West Sale as a time when we reunite with family and friends. We look forward to seeing you at the sale.

All Altenburg heifers are tested negative PI-BVD.





W/C Wide Track 694Y - reference sire



11

ASR Ms Desi U8154 x W/C Wide Track

5 Embryos Guaranteeing 2 Pregnancies

W/C Wide Track 694Y	3C W/C Right Track W9462	CE	10	CW	27
	Miss Werning 694S	BW	1.9	YG	-0.38
	HC Hummer 12M	WW	70	MB	0.09
ASR Ms Desi U8154	MLC Dessy K53	YW	106	BF	-0.07
		MCE	12	REA	0.96
		MM	19	API	116
		MWW	54	TI	68

PROJ EPDs

MGGS: WHF Desperado 212G

5 Embryos Guarantee 2 Pregnancies if work is done by Certified ET Technician ASR Ms Desi U8154 is our Hummer daughter out of a WHF Desperado daughter we purchased out of the North Dakota State Sale from Wade & Merri Staigle. ASR Ms Desi U8154 is a "very" moderate, deep, thick, and beautiful uddered female. I was most impressed by the \$50,000 Werning Wide Track bull last year when I saw him and thought it would be a good mating. She gave us several embryos, some we have put in, some we will put in this coming spring, but will only sell these 5 embryos in the Wild Wild West sale.

Homozygous Polled, HOMOZYGOUS Black

12

HC Hummer Semen

Semen
ASA# 2174450 Units: 30

WLE Power Stroke	Burns Bull X339U	CE	14	CW	23
	Nichols Joliette C75	BW	2.0	YG	-0.32
	Nichols Blk Destiny D12	WW	66	MB	0.23
LBR Destinys Dream K830	LBR Right Dream H830	YW	98	BF	-0.06
		MCE	17	REA	0.81
		MM	24	API	128
		MWW	57	TI	70

MGGS: BH Right Time 570E

HC Hummer semen has now become "rare and valuable". I believe we own more HC Hummer daughters than any breeder in North America. Our THE herd inventory count shows 29 daughters in production in the herd. They give you tremendous breeding options, balanced EPDs, fertility, cow longevity and superior carcass merit. In the era of Dream On, and soon to be NLC Upgrade, HC Hummer gives options to again consider. Hummer is a superior sire who will not be available much longer.

Homozygous Polled, HOMOZYGOUS Black



13

ASR Ms Claybasket Y194

Polled Purebred Heifer
ASA# 2598975 Tattoo: Y194 Born: 2-18-11

ASR/GLS Pacesetter U862	Hooks Pacesetter 8P	CE	7	CW	23
	GLS S82	BW	2.6	YG	-0.31
	GW Lucky Break 047G	WW	63	MB	0.02
ASR Ms Claybasket R523	ASR Black Scamp N321	YW	97	BF	-0.04
		MCE	11	REA	0.94
		MM	25	API	110
		MWW	57	TI	61

MGGS: PVF-BF BF26 Black Joker

AI bred to ASR Little Bear on 4-28-12. Verified with DG29 Pregtest.

PE to ASR Cowboy Up Y1157 from 5-20-12 to 6-30-12.

Proj. EPD 10 0.7 61 92 13 26 56 21.05 -0.29 0.07 -0.05 0.75 116 64

This heifer was part of our purebred "pick" Pen of 3 in 2012 and now we are bringing her back as a bred heifer. The ASR/GLS Pacesetter females are outstanding. Jim Benda, South Dakota, picked him out of our 2009 sale as our high selling bull and both of us have used him heavily. We love the females, probably the bulls greatest strength. She is carrying a ASR Little Bear calf, another great female sire we raised and are using heavily back in our program. If you like females with a brood cow look, you will like ASR Y194.

Double Polled, Double Black



14

ASR Dream Dixie Y165

Polled Purebred Heifer

ASA# 2598966

Tattoo: Y165

Born: 2-14-11

STF Mr Momentum H508	CE	5	CW	36.1
SVF/NJC Mo Better M217	BW	3.8	YG	-0.17
NJC SVF Antoinette K205	WW	75	MB	0.22
	YW	116	BF	-0.05
TJF Lucky Jess J224	MCE	1	REA	0.59
ASR Dream Dixie N370	MM	13	API	115
ASR Dream Catcher H829	MWW	51	TI	70

MGGS: LRS Preferred Stock 370C

AI bred to HTP SVF In Dew Time on 5-17-12 Verified with DG29 Pregtest.
PE to ASR Cowboy Up Y1157 from 5-20-12 to 6-30-12.

Proj. EPD 12 1.3 71 96 5 13 48 23 -0.16 0.25 -0.04 0.46 122 71

A Mo Better bred heifer with extra body length. This heifer goes back to our donor matron, ASR Dream Catcher H829, who left over 100 registered progeny for us. She is royally bred on the cow side of her pedigree, and we are now flushing her dam. A calf by In Dew Time will only add value to this female.

Double Polled, Double Black**15**

ASR Ms Super Baldy Y155

Polled 1/2 Blood Bred Heifer

ASA# 2598964

Tattoo: Y155

Born: 2-13-11

Baldrige Kaboom K243KCF	CE	13	CW	8.1
Connealy Thunder	BW	-1.8	YG	-0.34
Parka Of Conanga 241	WW	51	MB	0.25
	YW	82	BF	-0.07
WHF Black Sky 121L	MCE	11	REA	0.61
ASR Red Desi P461	MM	24	API	127
ASR Black Dessi M280	MWW	49	TI	66

MGGS: WHF Desperado 212G

AI bred to TNT Tuition on 4-27-12 Verified with DG29 Pregtest.
PE to ASR Cowboy Up Y1157 from 5-20-12 to 6-30-12.

Proj. EPD 12 -0.6 65 104 8 23 56 22.6 -0.18 0.43 -0.03 0.60 131 77

Connealy Thunder is one of the most popular Angus crosses with Simmental, especially the superiority of the SimAngus females. This Thunder daughter will be no exception, she will make a wonderful cow. And the TNT Tuition's will stabilize the SimAngus percentage and make an exceptional mating.

Double Polled, Black**16**

ASR Ms Super Baldy Y1136

Polled 1/2 Blood Heifer

ASA# 2598992

Tattoo: Y1136

Born: 3-03-11

CSU Ram Time 0115	CE	14	CW	15.4
ASR Game Time T754	BW	0.8	YG	-0.16
MS Geometric 015	WW	56	MB	0.45
	YW	88	BF	-0.02
HC Hummer 12M	MCE	11	REA	0.52
ASR Fine Art W999	MM	19	API	134
ASR Ms Fine Art R570	MWW	47	TI	68

MGGS: TNT Target J94

AI bred to TNT Tuition on 4-27-12 Verified with DG29 Pregtest.
PE to ASR Cowboy Up Y1157 from 5-20-12 to 6-30-12.

Proj. EPD 13 0.8 68 107 8 21 55 26.2 -0.09 0.53 -0.01 0.56 135 78

ASR Gametime is our CSU Ramtime son we use on our heifers. Not only a calving ease bull, but he makes great females. This heifer's dam is a very nice HC Hummer daughter who has an open heifer selling as lot 20. She is moderate, thick, deep.

Double Polled, Double Black



17 ASR Ms Super Baldy Y1132

Polled 1/2 Blood Heifer
 ASA# 2598989 Tattoo: Y1132 Born: 3-01-11

ASR New Posse W9115

HC Hummer 12M	CE	11	CW	15
ASR Little Molly P441	BW	0.2	YG	-0.24
Lemmon Newsline C804	WW	59	MB	0.28
Ebony Hills Newsline 604	YW	90	BF	-0.03
Ebony Hills EXT 032	MCE	10	REA	0.71
	MM	28	API	121
	MWW	57	TI	66

MGGS: Bar EXT Traveler 205

AI bred to TNT Tuition on 4-27-12 Verified with DG29 Pregtest.

PE to ASR Cowboy Up Y1157 from 5-20-12 to 6-30-12.

Proj. EPD 11 0.5 69 108 8 25 60 26 -0.13 0.45 -0.01 0.65 128 78

A deep ribbed daughter out of a Lemmon Newsline female who has had daughters in previous Wild Wild West sales. ASR New Posse is Hummer son out of our ASR Little Bear daughter who boasts 116 weaning ratio on 6 calves.

Double Polled, Double Black



18 ASR Ms Super Baldy Y1153

Polled 1/2 Blood Heifer
 ASA# 2599001 Tattoo: Y1153 Born: 3-10-11

ASR New Posse W9115

HC Hummer 12M	CE	8	CW	26
ASR Little Molly P441	BW	2.1	YG	-0.05
Hunts Calculator 2720	WW	68	MB	0.29
ASR Ms Calculator 451	YW	104	BF	0.00
FF Sensational Lady M214	MCE	9	REA	0.49
	MM	23	API	109
	MWW	57	TI	68

MGGS: BT Equator 205H

AI bred to TNT Tuition on 4-28-12 Verified with DG29 Pregtest.

PE to ASR Cowboy Up Y1157 from 5-20-12 to 6-30-12.

Proj. EPD 10 1.4 74 115 7 23 60 31.6 -0.03 0.45 0.01 0.54 122 78

ASR New Posse is a sire we sold to Gail & Jim Ligon, TN. After we saw his calves we thought enough of him to purchase him back. This heifer is out of one of our older Hunts Calculator daughters that doesn't miss. A beautiful, deep bodied bred heifer here.

Double Polled, Double Black



19 ASR Ms Jenny Z2157

Polled Purebred Heifer
 ASA# 2654049 Tattoo: Z2157 Born: 3-9-12

Hooks Pacesetter 8P

Hooks Shear Force 38K	CE	12	CW	17.1
Hooks Meah 22M	BW	1.9	YG	-0.28
SVF/NJC Built Right N48	WW	62	MB	-0.02
DR Ms 600U Black Dream	YW	89	BF	-0.06
	MCE	10	REA	0.58
	MM	20	API	110
	MWW	51	TI	60

MGGS: Circle S Leachman 600U

We had the good fortune to be able to purchase a full sister to RFS Built Like A Dream, the Built Right daughter who commanded \$60,000 in Louisville, Kentucky for the Ruth Family, Iowa. Mick Micklejohn, Colbran, Colorado purchased embryos from the Ruth's, producing MTTR Ms Jenny 521W. I really liked her and bought her in partnership with Bonnydale Simmental, Mike and Rob Introvigne, Western Australia. The trail of owners names is long, but the resulting red heifer out of this partner cow is good. She turned out red and probably makes her even more special. You'll like her when you see her she is unique in many ways. Has the eye appeal to show, but also has the "cow look" for when she is done. She will be a donor someday!

Homozygous Polled, Non Diluter Red



MTTR Ms Jenny 521W full sister to Built Like A Dream - reference

20 ASR Fine Art Z273

Polled Purebred Heifer

ASA# 2654083

Tattoo: Z273

Born: 2-18-12

Mr NLC Upgrade U8676
Ellingson Legacy M229

Ms NLC Mojo S1669 B

HC Hummer 12M

ASR Fine Art W999

ASR Ms Fine Art R570

MGGS: TNT On Target J94

CE	9	CW	32.6
BW	3.9	YG	-0.35
WW	76	MB	0.19
YW	111	BF	-0.08
MCE	14	REA	0.90
MM	17	API	121
MWW	55	TI	71

We thought the Upgrades would work on the Hummers – and they did! He added lots of muscle and rear quarter. This heifers dam is one of the good Hummer daughters we own, – and we may own more Hummer daughters than anyone. They are great cows with numerous mating options. ASR Z273 has a maternal sister, ASR Y1136 selling as lot 16. ASR Z273 had a weaning ratio of 103 and possesses big growth EPDs.

Double Polled, Double Black



21 ASR Upgrade Z2111

Polled Purebred Heifer

ASA# 2653941

Tattoo: Z2111

Born: 2-24-12

Mr NLC Upgrade U8676
Ellingson Legacy M229

Ms NLC Mojo S6119 B

TNT On Target J94

ASR Ms Black Desi R541

MLC Dessy K53

MGGS: WHF Desperado 212G

CE	8	CW	38.1
BW	4.4	YG	-0.36
WW	80	MB	0.06
YW	119	BF	-0.08
MCE	7	REA	0.96
MM	14	API	115
MWW	54	TI	69

An Upgrade x TNT On Target going back to the Desperado MLC K53 donor cow we were so successful with for so many years. This heifer will carry on the cow family tradition. ASR Z2111 had a weaning ratio of 103 and has top ranking weaning and yearling EPDs.

Double Polled, Double Black



22 ASR Fine Wine Z2127

Polled Purebred Heifer

ASA# 2654034

Tattoo: Z2127

Born: 2-27-12

Mr NLC Upgrade U8676
Ellingson Legacy M229

Ms NLC Mojo S6119 B

HC Hummer 12M

ASR Fine Wine U8110

ASR Fine Wine P440

MGGS: WHF Desperado 212G

CE	9	CW	46.4
BW	4.4	YG	-0.33
WW	90	MB	0.14
YW	133	BF	-0.08
MCE	14	REA	0.98
MM	13	API	123
MWW	57	TI	77

Another Upgrade x Hummer female with a 111 weaning ratio, plus a 89 weaning weight and 133 yearling weight EPDs. Unbelievable performance and carcass stacked in this genetic package.

Double Polled, Double Black





23

ASR Black Slam Z2104

Polled Purebred Heifer

ASA# 2654024 Tattoo: Z2104 Born: 2-22-12

TNT Tanker U263

Mr NLC Superior S6018

CE	8	CW	31.9
BW	1.1	YG	-0.37
WW	72	MB	0.02
YW	116	BF	-0.06
MCE	15	REA	1.09
MM	25	API	118
MWW	61	TI	69

ASR Black Slam U846

TNT Miss S17

HC Hummer 12M

ASR Red Slam P429

MGGS: WHF Grand Slam H21

What's not to like here. We love our Tanker females – and are not parting with many. But we thought we'd bring a nice one. A BVV ratio of 102 and VVV of 104 helps design an impeccable set of EPDs like this heifer has. Her good uddered Hummer dam doesn't hurt her either.

Double Polled, Double Black



24

ASR Precious Dream Z254

Polled 1/2 Blood Heifer

ASA# 2654077 Tattoo: Z254 Born: 2-14-12

SAV Pioneer 7301

SAV Final Anser 0035

CE	11	CW	29
BW	1.0	YG	-0.17
WW	71	MB	0.33
YW	111	BF	-0.02
MCE	4	REA	0.77
MM	27	API	116
MWW	62	TI	75

SAV Blackbird 5297

ASR Top Shelf

ASR Precious Dream W9122

Dam

MGGS: Lchman Bodybuilder 7303F

A very nice half blood heifer by the ever popular SAV Pioneer. His dam is by ASR Top Shelf, a son of ASR Dream Catcher; the brood cow matron of many years for us. This heifer numbers up right, has "the look" to make a cow, and exemplifies what we like a SimAngus to be.

Double Polled, Double Black



25

ASR Ms Super Baldy Z240

Polled 1/2 Blood Heifer

ASA# 2654069 Tattoo: Z240 Born: 2-12-12

Connealy Freightliner

Bon View Bando 598

CE	13	CW	24.2
BW	-0.3	YG	-0.01
WW	66	MB	0.32
YW	106	BF	0.00
MCE	12	REA	0.38
MM	23	API	131
MWW	57	TI	74

Joana Erica of Conanga

TNT Hummer H3 R360

ASR Lil Thumper U844

ASR Ms Lil Thumper R5103

MGGS: ASR Little Bear L126

We used our last straw of Connealy Freightliner to produce this one. A ratio of 108 for birth and 115 weaning helps makes her EPD profile so powerful. This one has cow written all over her – and has Chris and Doc Allen's name on her. Ask them about the Freightliner female they got from us out of the Wild Wild West sale in the past. The Freightliner daughter has worked for them – this one can work for you.

Double Polled, Double Black



26

ASR Ms Super Baldy Z267

Polled 1/2 Blood Heifer

ASA# 2654080 Tattoo: Z267 Born: 2-17-12

Connealy Thunder

Baldrige Kaboom K243KCF

CE	2	CW	21.4
BW	0.0	YG	-0.22
WW	67	MB	0.26
YW	101	BF	-0.04
MCE	8	REA	0.59
MM	24	API	121
MWW	57	TI	73

Parka of Conanga 241

ASR Top Shelf T7109

ASR Ms Addison W9155

ASR Miss Addison S6117

MGGS: TNT On Target J94

A really broody Connealy Thunder daughter out of an ASR Little Bear daughter. I brag on these Little Bear daughters being good – and they are. She weaned this calf with a very respectable 113 ratio.

Double Polled, Double Black

27**ASR Ms Super Baldy Z2114****Polled 1/2 Blood Heifer**
ASA# 2654030 Tattoo: Z2114 Born: 2-24-12**GCF Mr Amigo**

CNS Dream On L186

GCF Miss MT-Zel

Brown Vacation H7106

ASR Ms Vacation S667

Ms Geometric 006

MGGS: Sire

CE	9	CW	5
BW	0.0	YG	-0.26
WW	61	MB	0.10
YW	75	BF	-0.05
MCE	4	REA	0.45
MM	11	API	97
MWW	41	TI	64

One of our best and donor quality Red Angus cows produced a powerful halfblood by GCF Mr.Amigo. We are so pleased with the halfblood Amigo bulls we will be selling this spring – these females are a bonus. Z2114 had a 109 BW ratio and 106 WW ratio.

Homozygous Polled, Non Diluter Red**28****ASR Ms Super Baldy Z2152****Polled 1/2 Blood Heifer**
ASA# 2654048 Tattoo: Z2152 Born: 3-08-12**RCR Augustus R54**

ESNK31

RCR Nicole N32

Boyd New Day 8005

ASR Ms New Day S640

ASR Ms Future Direction 450

MGGS: CA Future Direcion 5321

CE	13	CW	23
BW	-0.1	YG	-0.12
WW	63	MB	0.45
YW	103	BF	-0.01
MCE	9	REA	0.58
MM	23	API	133
MWW	55	TI	75

I can't say enough about these RCR Augustus females. We purchased Augustus from Jeff Houck and Rock Creek Ranch at 6 years of age and he is still working for us. We are not selling semen or purebred females and saving them all. But we are selling our SimAngus females, – and they are something. We have flushed this Boyd New Day dam for Australia. I think you'll agree, this Super Baldy female is special. Ratio of 109 for both BW and WW.

Homozygous Polled, HOMOZYGOUS Black**29****ASR Ms Super Baldy Z2179****Polled 1/2 Blood Heifer**
ASA# 2654057 Tattoo: Z2179 Born: 3-17-12**RCR Augustus R54**

ESNK31

RCR Nicole N32

Boyd New Day 8005

CDL Tawanda 306

CDL Tawanda 91

MGGS: OCC Anchor 771A

CE	11	CW	20.7
BW	2.8	YG	-0.13
WW	57	MB	0.42
YW	92	BF	-0.01
MCE	6	REA	0.55
MM	19	API	114
MWW	47	TI	63

A three quarter sister to the previous lot. Another good, deep bodied Augustus daughter from one of our good Boyd New Day cow families. This cow family has produced a herd bull for us, we are using today.

Homozygous Polled, HOMOZYGOUS Black



30

ASR Ms Super Baldy Z2192

Polled 1/2 Blood Heifer

ASA# 2654063

Tattoo: Z2192

Born: 4-20-12

RCR Augustus R54

ESNK31

RCR Nicole N32

SAV 8180 Traveler 004

ASR Ms Madeline T762

SBF Madeline 735P

CE	10	CW	35.5
BW	3.1	YG	0.06
WW	74	MB	0.38
YW	117	BF	0.01
MCE	8	REA	0.38
MM	17	API	117
MWW	54	TI	72

MGGS: Boyd New Day 8005

Another Augustus with a little different twist to the bottom side of the pedigree, a Traveler 004 cow. This cow did a fantastic job at weaning with a 117 ratio on this heifer. That ratio helped build a big set of growth EPDs. A younger born heifer, only because we flushed the cow the year before. This heifer is powerful, wide and well made.

Homozygous Polled, Homozygous Black



31

ASR Ms Super Baldy Z2244

Polled 1/2 Blood Heifer

ASA# 2654071

Tattoo: Z224

Born: 2-13-12

SVF/NJC Mo Better M217

STF Mr Momentum H508

NJC SVF Antoinette K205

CA Future Direction 5321

ASR Ms F Direction T7115

MS Geometric 102 2654071

CE	10	CW	12.3
BW	0.9	YG	-0.17
WW	48	MB	0.56
YW	82	BF	-0.02
MCE	6	REA	0.52
MM	21	API	121
MWW	45	TI	65

MGGS: BJR Make My Day 981

A very moderate framed Mo Better out of a genetically clean, defect free CA Future Direction cow. Some worry about the Mo Better's getting too framey ... not the case here. This one is deep and thick. She is very quiet and would make some small junior a good "starter" heifer, and then a cow for them. There will be some carcass merit here.

Homozygous Polled, Double Black



32

ASR Ms Super Baldy Z2133

Polled 1/2 Blood Heifer

ASA# 2654038

Tattoo: Z2133

Born: 3-02-12

HSF Better Than Ever

SVF/NJC Mo Better M217

HSF Victoria P30

CSU Ram Time 0115

ASR Ram Time T740

PWA Red Jessie M217

CE	11	CW	-3.4
BW	-1.1	YG	-0.24
WW	46	MB	0.03
YW	62	BF	-0.05
MCE	5	REA	0.31
MM	19	API	97
MWW	42	TI	54

MGGS: BJR JR 105

Better Than Ever, is our bull we share with Bob Grass, MN and has done a great job for calving ease on heifers, reducing frame, adding muscle, making outstanding females. Here is a smaller framed female that has a bit of extra eye appeal and will make a very moderate SimAngus cow. She is out of a direct daughter of CSU Ramtime.

Homozygous Polled, Double Black

COW CAMP RANCH

Kent, Mark and Nolan Brunner

3553 Upland Road • Lost Springs, KS 66859

785-983-4483 • www.cowcampbeef.com • nolan@cowcampbeef.com



Cow Camp Ranch (ASA member #3790) was established in east central Kansas on the western edge of the well-known Flint Hills native grassland. The Seed Stock headquarters are located a mile off the legendary Santa Fe Trail and near the old lost springs of Lost Springs, KS. Cow Camp is a family owned operation, now in its fifth generation. We have been a farming and ranching family from the beginning and it has and always will be our way of life.

At Cow Camp we breed our cattle to fit the commercial industry. They are bred heavily on economic traits so the bulls will work for the commercial cowman and the females will raise the next generation of bulls. With that in mind, our cows spend the majority of their time grazing native bluestem grass with supplemental hay and protein as needed. We have utilized an intense AI and ET program in both our spring and fall herds that has played a major role in the progress of our herd. We run our registered Angus herd side by side with our Simmental and SimAngus cows and have learned to respect both breeds for what they bring to the Beef industry. In addition to our seed stock operation, we own and operate a commercial feed lot. This has been a big influence on our focus on the real world of selling cattle by the pound based on feed lot

performance and carcass merit.

Kent, Mark, and Nolan (Kent's son) Brunner manage the seed stock operation while Tracy Brunner (a brother to Kent and Mark) works primarily on the Feed Lot side of the family partnership. Over the years our family has been heavily involved in the ASA Junior Program and has found it to be very rewarding. In all, there have been ten Cow Camp Junior members in past years. Attending a regional or national show is about as close to a summer vacation as we get.

We are very excited to be a part of the Wild West Group and would like to thank them for the opportunity to work with them. It is always a pleasure to work with knowledgeable cattlemen and women. We look forward to seeing you all in Brighton this coming January.

*The Brunner Family
At Cow Camp Ranch*



33

CCR Ms Lexi 1073Y

Polled Purebred Heifer

ASA# 2601929 Tattoo: 1073Y Born: 2-06-11

JS Sure Bet 4T

SVF/NJC Mo Town M216

JS Black Magic Woamn 13P

Triple C Inavision R47K

CCR Ms Inv 6036 8039U

CCR Ms Sarah 6036S

CE	6	CW	33.9
BW	3.6	YG	-0.28
WW	68	MB	-0.09
YW	99	BF	-0.05
MCE	12	REA	0.81
MM	27	API	104
MWW	60	TI	60

MGGS: CNS Dream On L186

AI bred to CCR Sure Fire 5028Y on 5-7-12. Ultrasounded safe in calf.
PE to CCR Stetson 5315Y from 5-27-12 to 6-11-12.

Proj. EPD 8 2.4 70 101 9 23 59 29 -0.22 0.15 0.00 0.97 124 68

This powerful bred heifer is big middled and has terrific rib shape. She was a stand out as a calf and she's still one of our best as a bred heifer. Out of a really nice Invasion cow with a great udder. She is bred to CCR Sure Fire, our top selling bull from our spring 2012 sale selling to Prairie View Farms in Missouri. This will be one of the first calves out of this outstanding young sire.

Homozygous Polled, HOMOZYGOUS Black



34

CCR Ms Abigail 1102Y

Polled Purebred Heifer

ASA# 2601930 Tattoo: 1102Y Born: 1-23-11

TNT Ever Ready R232

HC Hummer 12M

RC Miss Legacy 058N

CCR Scanner K158T

CCR Ms Sugar Land 9073W

CCR Ms Dream On 6057S

CE	12	CW	37
BW	1.2	YG	-0.36
WW	75	MB	-0.24
YW	110	BF	-0.08
MCE	12	REA	0.84
MM	22	API	137
MWW	59	TI	76

MGGS: CCR Powder Power II

AI bred to CCR Catalyst 7035W on 5-7-12. Ultrasounded safe in calf.
PE to CCR Stetson 5315Y from 5-27-12 to 6-11-12.

Proj. EPD 16 -1.3 70 112 10 28 63 31 -0.06 0.81 0.03 0.70 167 92

This heifer is extremely long bodied and has that great extension up front. Her young dam has turned into a power cow at Cow Camp and this heifer will be a powerful cow as well. She's mated to CCR Catalyst, another young sire with a lot of power and phenotype as well as breed leading numbers.

Double Polled, HOMOZYGOUS Black



35

CCR Ms Sunrise 2004Z

Polled 1/2 Blood Heifer

ASA# 2659840 Tattoo: 2004Z Born: 2-16-12

MCC Daylite 0005

MCC Daybreak

AG Miss In Focus 7302

CNS Dream On L186

CCR Ms 3249 Dream 0071X

CCR 992F Fullhouse 3249N

CE	17	CW	39
BW	-0.7	YG	-0.04
WW	73	MB	0.53
YW	117	BF	0.00
MCE	15	REA	0.63
MM	24	API	160
MWW	60	TI	85

MGGS: RC Full House 025L

This heifer is at the top end of her contemporaries for performance and phenotype as well. She was selected for the Wild West sale from a large sire group of MCC Daylite calves. She is sound and very extended up front. Very easy to work around and she comes from a cow family that has been around Cow Camp for a long time. This one is special.

Double Polled, HOMOZYGOUS Black

36

CCR Ms Amanda 2017Z

Polled 3/4 Blood Heifer

ASA# 2659841

Tattoo: 2017Z

Born: 2-29-12

Hooks Shear Force 38K

SDS Graduate 006X

SDS Queen 814U

GW Lucky Man 644N

CCR Ms Lucky Man 8114U

CCR Ms Preferred 5024R

CE	15	CW	39
BW	1.4	YG	-0.18
WW	73	MB	0.38
YW	113	BF	-0.02
MCE	13	REA	0.90
MM	30	API	146
MWW	67	TI	78

MGGS: SRS J914 Preferred Beef

This Graduate sired heifer was another top performer at Cow Camp. Her cow family traces back 5 generations of AI sires: Graduate, Lucky Man, Preferred Beef, Lucky Strike, Blk Knight U2, TNT Mr.T. Raised by her three year old momma, this heifer has tremendous potential.

Double Polled, Homozygous Black**37**

CCR Ms Thelma 2064Z

Polled 1/2 Blood Heifer

ASA# 2659842

Tattoo: 2064Z

Born: 3-07-12

Hooks Shear Force 38K

Triple C Singletary S3H

Lucas Josie 19K

Qukerhill Objective 3J15

CCR Ms Objective 3242 8077

CCR Lady Of Midland 3242N

CE	12	CW	38
BW	0.7	YG	-0.24
WW	73	MB	0.42
YW	113	BF	-0.04
MCE	10	REA	0.90
MM	19	API	132
MWW	55	TI	80

MGGS: BR Midland

You just can't make them any better. Singletary has worked tremendously well on our PB Angus cows and this heifer is one of our best. Her young Objective sired dam has a beautiful udder and a great disposition. This heifer is good enough to go any direction you choose; show heifer, donor cow, brood cow.

Homozygous Polled, Homozygous Black**38**

CCR Ms Roxanne 2099Z

Polled Purebred Heifer

ASA# 2659843

Tattoo: 2099Z

Born: 2-20-12

Hooks Shear Force 38K

Triple C Singletary 53H

Lucas Josie 19K

GW Lucky One 686K

CCR Ms L One 0135 8036U

CCR Dalias Reflection 135K

CE	8	CW	36
BW	3.8	YG	-0.27
WW	70	MB	0.26
YW	103	BF	-0.06
MCE	13	REA	0.82
MM	20	API	127
MWW	55	TI	69

MGGS: PVF-BF BF26 Black Joker

Here is a really stout made purebred heifer out of Singletary again. Her mother is super uddered and deep middled. There is no reason this heifer won't be the same. You won't find a better opportunity to invest in a purebred heifer of this caliber. She has the ability to raise some great ones

Homozygous Polled, Double Black



39 CCR Ms Melanie 2117Z

Polled Purebred Heifer

ASA# 2659844 Tattoo: 2117Z Born: 2-19-12

IR Expedition W413

TNT Dual Focus T249

CE	12	CW	27
----	----	----	----

IR Ms Valiosa R888

BW	1.6	YG	-0.13
----	-----	----	-------

CCR Snake Eyes M217P

WW	61	MB	0.33
----	----	----	------

CCR Ms Snake Eyes 6025S

CCR Molly Ann

YW	92	BF	-0.01
----	----	----	-------

MCE	12	REA	0.63
-----	----	-----	------

MM	28	API	132
----	----	-----	-----

MWW	59	TI	67
-----	----	----	----

MGGS: Hartblack Reward E214

Pretty and stout best describe this fancy prospect. She has been one of the standouts from early on that catches everyone's eye. Her CCR Snake Eyes dam has that clean tight udder that we strive to put on all of our females. Her sire Expedition, has done a tremendous job at Cow Camp. His calves have growth and are scanning well above average for IMF.

Double Polled, Homozygous Black



40 CCR Ms Ivory 2129Z

Polled 5/8 Blood Heifer

ASA# 2659845 Tattoo: 2129Z Born: 2-27-12

SDS Graduate 006X

Hooks Shear Force 38K

CE	17	CW	26
----	----	----	----

SDS Queen 814U

BW	-2.1	YG	-0.08
----	------	----	-------

SVF/NJC Built Right N48

WW	64	MB	0.57
----	----	----	------

CCR Ms Built Right 6414S

4237

YW	99	BF	0.05
----	----	----	------

MCE	8	REA	0.97
-----	---	-----	------

MM	26	API	154
----	----	-----	-----

MWW	58	TI	83
-----	----	----	----

MGGS:

This blaze faced heifer is extremely long bodied with a clean look to her. Very big middled and she comes from an extremely productive commercial Angus grand dam. The 4237 cow has raised numerous commercial bulls and replacement females for us. If she is anything like her dam and grand dam she will be a great momma cow.

Double Polled, Homozygous Black



41 CCR Ms Beverly 2135Z

Polled Purebred Heifer

ASA# 2659846 Tattoo: 2135Z Born: 2-23-12

Triple C Singletary 53H

Hooks Shear Force 38K

CE	10	CW	39
----	----	----	----

Lucas Josie 19K

BW	2.8	YG	-0.23
----	-----	----	-------

HTP SVF In Dew Time

WW	77	MB	0.21
----	----	----	------

CCr Ms 4045 Time 7322T

CCR Ms Pretty 4045P

YW	110	BF	-0.06
----	-----	----	-------

MCE	12	REA	0.74
-----	----	-----	------

MM	17	API	131
----	----	-----	-----

MWW	56	TI	73
-----	----	----	----

MGGS: CCR Ameritrade 155J

Here is an ET heifer from an outstanding flush of Singletary calves. We'll have several top full sib bull calves in our February bull sale and full sib heifers in our replacement pen as well. This purebred heifer has tremendous earning potential with her pedigree and phenotype. She is out of a very impressive Dew Time cow that comes from a maternal cow family.

Homozygous Polled, Homozygous Black

OVAL F RANCH

Don & Marilyn Fischer • Winston, MO • (816) 392-8771
 Matt & Andrea Fischer • St Joseph, MO • (816) 383-0630
 www.ovalfranch.com • email: ovalf@hotmail.com



Oval F Ranch was founded in 1971 with the purchase of 7 half Simmental bred heifers. One of those heifers was the base for our Princess-Julie-Ringleader cow family. We have turned 15 generations in that cow family, all AI sired, with the goal of developing more COW POWER. We appreciate their wide hips, deep bodies, and productivity with eye appeal. Our other premier cow family came on the scene in 1999 with the birth of Oval F Jasmine J232. Through the years we have identified her superiority and really appreciate her fertility and calf raising ability and especially her sound hard hooves and excellent teat and udder quality for longevity. Remember: The COW MAKES The DIFFERENCE.

42 Oval F Miss Goldmine Y23

"The Oval F Crew"

Polled Purebred Bred Heifer
 ASA# 2602304 Tattoo: Y23 Born: 2-15-11

SS Goldmine L42	WLE Power Stroke	CE	12	CW	16.5
	GW Miss Lucky Buck 858G	BW	0.7	YG	-0.35
WT06	Ellingson Black Perfector	WW	58	MB	0.08
	Rew/SS Tanna R11	YW	77	BF	-0.08
		MCE	8	REA	0.56
		MM	22	API	123
		MWW	51	TI	62

MGGS: CNS Dream On L186

AI bred to MCM Top Grade on 5-11-12
 Proj. EPD 13 0.0 65 96 12 24 57 22.8 -0.32 0.27 -0.05 0.81 136 74

Y23 is a long profiling, clean made heifer that possesses an awesome attitude. She is good footed and free moving with a balanced set of EPD's. Her mating to the young Genex sire MCM Top Grade should be exciting.

Double Polled, Double Black



MCM Top Grade - AI reference sire for Lot 42 and 43

43 Oval F Cool Diva Y36

Polled Purebred Bred Heifer
 ASA# 2602316 Tattoo: Y36 Born: 3-15-11

New Trend Way Cool 6W	Wheatland Bull 680S	CE	5	CW	43
	Keystone Radiance 13R	BW	5.5	YG	-0.21
Oval F Linda L320	SAC Mr MT 73G	WW	72	MB	0.02
	Oval F Jasmine J232	YW	109	BF	-0.04
		MCE	4	REA	0.78
		MM	23	API	97
		MWW	59	TI	62

MGGS: LRS Big Country 37E

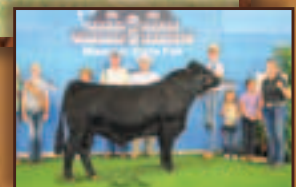
AI bred to MCM Top Grade on 5-12-12
 Proj. EPD 9 2.4 72 112 10 25 61 36 -0.25 0.24 -0.03 0.92 119 72

You may remember the Cool Diva name as she is a full sister to the pen of heifers we sold here a year ago. Here is a big topped, muscular, clean fronted bred with plenty of growth and style. These Oval F Linda L320 progeny have been admired by many breeders, including Adcock's Oval F Nicolette N443 and Oval F Cool Dude Y56, 2012 National Simmental Show Division Champion and 2012 Missouri State Fair Grand Champion Bull. Here is an opportunity to add some outcross genetics to your program. We are truly excited about her mating to MCM Top Grade. We believe this heifer calf could offer unlimited potential.

Homozygous Polled, Homozygous Black



Oval F Cool Dude Y56 - reference





44 Oval F Lara Z203

Polled Purebred Heifer
 ASA# 2659901 **Tattoo:** Z203 **Born:** 1-28-12

Ellingson Legacy M229
Mr NLC Upgrade U8676 Ms NLC Mojo S6119 B
 HTP SVF In Dew Time

Oval F Willow W918
 Oval F Sandy S620

CE	11	CW	45.2
BW	3.2	YG	-0.28
WW	82	MB	0.28
YW	120	BF	-0.06
MCE	14	REA	0.91
MM	12	API	132
MWW	52	TI	77

MGGS: HC Hummer 12M

Here is an attractive headed, long fronted, eye appealing heifer that is extremely free and fluid moving. Z203 is deep sided and long bodied with a cow look. In addition to her eye catching look, she also offers an exciting set of EPDs. From the top 20% CE to the top 2% WW and YW, she also has impressive carcass numbers, and the top 5% API and 1% TI. She has a nice disposition for a junior project and comes from a strong cow family in our herd.

Homozygous Black, Homozygous Polled BVD-PI negative.



45 Oval F Lena Z225

Polled Purebred Heifer
 ASA# 2659902 **Tattoo:** Z225 **Born:** 2-08-12

Hooks Shear Force 38K
Triple C Singletary 53H Lucas Josie 19K
 GFI Magnum K52

Oval F River R586
 Oval F Natalie N427

CE	8	CW	24.5
BW	1.3	YG	-0.25
WW	63	MB	0.20
YW	89	BF	-0.06
MCE	11	REA	0.63
MM	19	API	127
MWW	51	TI	66

MGGS: SRS J914 Preferred Beef

Z225 has a tremendous amount of body and depth. She is one of the heaviest muscled heifers in our calf crop this year. This Singletary daughter descends from our Julie cow family and offers a very balanced set of EPDs with the top 25% BVV and top 10% API. Juniors be sure to find this heifer at the Pen Show in the yards.

Homozygous Polled, Double Black. BVD-PI negative.



46 Oval F Lita Z231

Polled Purebred Heifer
 ASA# 2659903 **Tattoo:** Z231 **Born:** 2-10-12

Hooks Shear Force 38K
Triple C Singletary S3H Lucas Josie 19K
 HTP SVF In Dew Time

Oval F Tyra T721
 Oval F Rita R561

CE	10	CW	45.4
BW	4.6	YG	-0.18
WW	79	MB	0.30
YW	116	BF	-0.05
MCE	12	REA	0.69
MM	19	API	134
MWW	59	TI	74

MGGS: SRS J914 Preferred Beef

This is really a special one. Lita is a full bodied, high volumed heifer that has plenty of muscle and shape. She has an exceptional set of EPDs that can bring lots of value to a breeding program. Z231 comes from a very productive cow family and will be part of our pen of heifers in the yards.

Homozygous Polled, Double Black. BVD-PI negative.



47 Oval F Lulu Z202

Polled 3/4 Blood Heifer
 ASA# 2663345 **Tattoo:** Z202 **Born:** 1-27-12

CNS Dream On L186
GCF Mr Amigo GCF Miss MT Zel
 Red Howe Bold Edition 80

Oval F Julies Edition X85
 Oval F Julie J224

CE	6	CW	19
BW	0.7	YG	-0.22
WW	61	MB	0.09
YW	81	BF	-0.04
MCE	6	REA	0.56
MM	16	API	98
MWW	46	TI	64

MGGS: TSS-BOZ Bold Cat

Clean fronted, big ribbed, and attractive heifer. We brought this Amigo daughter in from the pasture because of her wedge look and eye appeal. Her dam is our favorite red 2 yr old half blood. If you are looking for some great red genetics here she is.

Non Dilutor Red, Homozygous Polled. BVD-PI negative.

ROCK CREEK RANCH

Jim & Jean Houck • Allen, KS • (620) 443-5700
 Jeff & Lori Houck • Americus, KS • (620) 443-5751
www.houckrockcreekranch.com



Producing beef in demand with consumers is the name of the game at Rock Creek Ranch just north of Americus, Kansas. Owned and operated by the Houck family, the ranch has evolved with the beef industry through dynamic breeding program, the judicious use of natural resources and through record keeping on each individual animal.

Over the past 40 years, Rock Creek Ranch has grown from its original 600 acres to well over 3,500 acres of pasture. Jim and Jean Houck and their son and daughter-in-law, Jeff and Lori Houck, perform the day-to-day management of the ranch. Jim and Jean have three other children who along with their spouses, frequently help out on the ranch. They are Tim and Cindy (Houck) DeHoff of Tonganoxie, Kansas, Jim and Sona Houck of Miami, Florida and Brandon and Jamie Houck of Allen, Kansas.

The guiding force behind this family operation is homegrown, superior genetics. The foundation is a registered Simmental and commercial cowherd, split into spring and fall calving units. Both are centered around an intensive synchronization and artificial insemination (AI) program. All heifers are artificially inseminated using proven, high-accuracy AI sires or ranch-owned bulls.

"The Rock Creek Ranch Crew"

48

RCR Zenith Z96

Polled Purebred Heifer

ASA# 2656249

Tattoo: Z96

Born: 3-09-12

RCR Wrangler S215

EPSJ302

CE	10	CW	27
BW	0.3	YG	-0.17
WW	68	MB	0.15
YW	97	BF	-0.04
MCE	10	REA	0.60
MM	15	API	121
MWW	49	TI	69

RCR Liz L40

HTP SVF In Dew Time

RCR Violet W22

RCR Violet T62

MGGS: RCR Wodrow R38

RCR Zenith is moderate framed, deep sided, thick made and attractive. She is a typical RCR Wrangler daughter. Z96 had a 76 pound birth weight to ratio 110. Her dam is our top In Dew Time daughter that has a 123 birth weight ratio on her calves. Zenith will go on to make a very productive cow.

Homozygous Polled, Homozygous Black





49

RCR Natalie Z214

Polled Purebred Heifer

ASA# 2656250

Tattoo: Z214

Born: 3-22-12

RCR Stetson T17

Hooks Shear Force 38K

RCR Sadie R29

KS Baxter L791

RCR Natalie N75

RCR Jet Mark J184

MGGS: KS Hercs Black Jet F055

CE	13	CW	19.3
BW	-1.4	YG	-0.24
WW	59	MB	0.21
YW	87	BF	-0.05
MCE	13	REA	0.63
MM	30	API	137
MWW	60	TI	69

RCR Natalie is sired by one of the breed leaders for calving ease, light birth weight and carcass merit, RCR Stetson. She is feminine designed, correct and has tremendous rib shape for a moderate framed cow prospect. The Natalie cow family is one of our top producing lines. This is definitely one of our best cow prospects. Her full brother sold well in our bull sale last year. She has a sweetheart disposition.

Homozygous Polled, Homozygous Black

50

RCR Zenith Z83

Polled Purebred Heifer

ASA# 2656251

Tattoo: Z83

Born: 3-06-12

LRS Megawatt 77X

Ellingson Legacy M229

LRS Ms Electra 539R

ESPJ302

RCR Karia U60

RCR Karia R36

MGGS: ESNK31

CE	9	CW	43
BW	4.2	YG	-0.26
WW	76	MB	0.04
YW	112	BF	-0.08
MCE	9	REA	0.76
MM	14	API	117
MWW	52	TI	67

This is one of my favorite heifers of the 2012 calf crop. RCR ZENITH is stout made, massive in her rib shape and is long spined. She should go on to be a true power cow. Her RCR Wrangler sired dam is a beautifully designed, big ribbed, nice uddered cow.

Double Polled, Homozygous Black

51

RCR Windom Z104

Polled Purebred Heifer

ASA# 2656252

Tattoo: Z104

Born: 3-10-12

SAS T101 Sweet Meat

HTP SVF In Dew Time

SAS Sweet Star R101

RCR Wrangler S215

RCR Windom W221

RCR Miss Ike N333

MGGS: CCR Ike 947L

CE	5	CW	36
BW	3.5	YG	-0.07
WW	76	MB	0.09
YW	103	BF	-0.02
MCE	10	REA	0.51
MM	17	API	101
MWW	55	TI	66

RCR WINDOM is one of our most attractive patterned heifers. She is long bodied, smooth made and free moving. She is out of a moderate sized RCR Wrangler three year old that is very productive with a flawless udder typical of the Wrangler daughters. Z104 is heterozygous black and homozygous polled.

Homozygous Polled, Heterozygous Black

52

RCR Jamie Z84

Polled Purebred Heifer

ASA# 2656253

Tattoo: Z84

Born: 3-06-12

SS Ebonys Grandmaster

PVF-BF BF26 Black Joker

SOSF Ebonys Joy L123

ESPJ302

RCR Jamie W6

RCR Jamie T38

MGGS: Kappes Copy Right N270

CE	9	CW	26.1
BW	1.5	YG	-0.19
WW	63	MB	0.09
YW	91	BF	-0.02
MCE	4	REA	0.71
MM	29	API	118
MWW	60	TI	64

RCR Jamie is flashy in her make up with the big top and butt found in the Grandmaster progeny. She is up headed and has the show look. Her dam is a big sided, thick made cow that brings in the heavy ones each year. W6 has a 109 weaning weight ratio on her progeny.

Homozygous Polled, Homozygous Black

COLORADO SIMMENTAL ASSOCIATION



The Colorado Simmental Association was formed in August 1970 to promote Simmental genetics. Today it totals 25 ranch memberships, representing a wide range of operation sizes and geographic diversity. Though small in membership numbers, the CSA has a full plate of activities. CSA annually organizes and runs the National Western Stock Show breed events. This includes the yard's bull and female pen shows, plus the popular People's Choice Power Bull. CSA also coordinates the hill shows and oversees The One Sale at Denver. CSA's numerous volunteers provide countless hours to bring you a week of Denver's Mile-High magic.

CSA volunteers also coordinate the breed's Colorado State Fair show and helped host a multi-breed educational field day this fall.

Colorado's junior membership helps with the various shows and functions at both Denver and Pueblo. The juniors reap many rewards, such as the financial boost given by Wild, Wild West Sale partners, who donate the Lot 1's semen and embryo proceeds to aid both associations. CSA also annually presents youth scholarships, plus helps defray expenses to encourage participation in the AJSA summer show schedule. CJSA members compete in numerous contests during their annual Field Day weekend event. CSA also sponsors awards annually to Simmental sired Champions at County Fairs across the state.

* **BDK Simmentals • Bruce, Donna, and Kathryn German • Longmont, CO • 720-982-8541**

We have a small, quality herd of registered Simmental and Angus females

that have proven themselves in the show ring and then gone on to produce in a commercial environment grazing the short grass in the summer and calving in the cornstalks. Celebrating 15 years raising Simmental cattle and many years participation in the Wild Wild West Sale.

* **Ahlberg Simmentals • Rod and Vicky Ahlberg • Longmont, CO • 303-776-2342, home • 303-775-1730, cell**

Ahlberg Simmentals, located in Longmont, Colorado, is owned and operated by Rod and Vicky Ahlberg along with their daughter Cashley, breeding Simmental and Simangus cattle. Even though our cow herd is small in numbers we truly believe in cow power as some of our females have proved themselves in the show ring but most important all our females are required to produce profitable offspring. With the use of AI and embryo transfers we strive to produce very functional cattle that are strong in maternal traits, longevity, easy fleshing with loads of style without sacrificing performance. We want our cattle to be an asset in today's economy no matter how they are marketed. We offer our females and bulls for sale by private treaty and visitors are always welcomed. We are excited to offer to you our entire NWSS Percentage Pen of 3 heifers at this sale. Stop by the Wild, Wild, West stall in the yards in Denver and see these great females.

53 BOK Ms Better Foundation

Polled 1/2 Blood Heifer
ASA# 2639797 Tattoo: Z203 Born: 1-28-12

STF Mr Momentum H508	CE 3	CW 34
SVF/NJC Mo Better M217	BW 2.9	YG -0.01
NJC SVF Antoinette K205	WW 68	MB 0.42
QLC Foundation	YW 114	BF -0.01
2TM Ms Foundation 711	MCE 3	REA 0.36
KG Adra	MM 16	API 93
	MWW 50	TI 70

MGGS: Vermilion Yellowstone

Here's a fancy SimAngus female by Mo Better. She has unique baldy markings, feminine and balanced structure. She could show then go on to raise high value percentage offspring.

Homozygous Polled, Homozygous Black

54 AHB Sensational Bandita

Polled 1/2 Blood Heifer
ASA# 2643322 Tattoo: 205Z Born: 2-20-12

CNS Dream On L186	CE 10	CW -2.3
GCF Mr Amigo	BW 0.8	YG -0.33
GCF Miss MT Zel	WW 50	MB 0.09
BEF Expression 22K	YW 60	BF -0.06
CVR Ms Tasha 705T	MCE 6	REA 0.52
Miss Chillen Ice 805P	MM 13	API 97
	MWW 38	TI 54

MGGS: Booh Dices Blck Jack

205Z has cow written all over her. She is long bodied, deep sided with extra depth in her flank. This broody, well balanced sound, heifer is sired by GCF Mr. Amigo who sired the Champion Percentage Female at the 2011 AJSA National Classic. 205Z has a promising future. Look 205Z up at the NWSS as she is entered in the percentage pen of 3 heifer show.

Polled, Black

BOK SIMMENTALS



AHLBERG SIMMENTALS





Sedgwicks Erica U332 - reference dam

55 A&L&B Fancy Scotch 232Z

Polled 1/2 Blood Heifer
ASA# 2639795 **Tattoo: 232Z** **Born: 2-22-12**
 Ellingson Legacy M229
Mr NLC Upgrade U8676 Ms NLC Mojo S6119 B
 BC Lookout 7024
Sedgwicks Erica U332 Sedgwicks Erica S3321
MGS: Lemmon Newsline C804

CE	10	CW	31.5
BW	1.3	YG	-0.30
WW	75	MB	0.45
YW	115	BF	-0.05
MCE	8	REA	0.94
MM	18	API	128
MWW	55	TI	81

232Z is definitely the family favorite as she has it all. She is a genetic treasure being none other than the daughter of the 2010 Grand Champion National Jr. Angus Female, Sedgwicks Erica U332 and the popular Mr. NLC Upgrade U8676. A family member sold in the North American sale for \$5,700 by McCurry Bros., Kansas. This angular made female is ultra feminine combining volume, fleshing ability and soundness into one package topped off with a super disposition. With this much style, muscle, and elegance don't miss this rare opportunity to acquire a very promising heifer. She is entered in the NWSS percentage pen of 3 heifers.

Homozygous Polled, HOMOZYGOUS Black

56 A&L&B Timeless Assets

Polled 1/2 Blood Heifer
ASA# 2643323 **Tattoo: 265Z** **Born: 2-14-12**
 Ellingson Legacy M229
Mr NLC Upgrade U8676 Ms NLC Mojo S6119B
 GAR Predestined
Sedgwicks Barbara 265W Sedgwicks Barbara 265T
MGS: SAV 8180 Traveler 004

CE	10	CW	10.8
BW	2.8	YG	-0.15
WW	83	MB	0.64
YW	132	BF	-0.03
MCE	10	REA	0.81
MM	18	API	138
MWW	59	TI	87

265Z is an incredibly powerful, huge hiped, deep made female with plenty of extension. This free moving, structural sound made heifer is solidified by her EPD's. 265Z's sire, Mr. NLC Upgrade U8676 needs no introductions and out of a dam that is extremely impressive. Here's a powerhouse of production heifer with all of the essential ingredients to deliver a profit and be a candidate to build a cow family upon. Her best days are yet to come. 265Z is entered in NWSS percentage pen of 3 heifers.

Polled, Black



57 A&L&B Cool N Candid 283Z

Polled 1/2 Blood Heifer
ASA# 2637915 **Tattoo: 283Z** **Born: 2-18-12**
 STF High Dollar NH486
STF Addiction W152 STF Desmarque SL57
 BEF Expression 22K
CVR Ms Vesata 832U KG Phantazim 32
MGS: SAF Phantom

CE	8	CW	-2.1
BW	0.7	YG	-0.12
WW	45	MB	0.17
YW	60	BF	-0.04
MCE	8	REA	0.08
MM	19	API	98
MWW	41	TI	51

Power and production best describe 283Z. She is packed with muscle mass, dimension and sheer substance. This comes as no surprise as she is rich in heritage cow family strength, 283Z goes back to the famous STF Desa Rae on the top side. On the bottom side, her powerful dam has consistently produced the pasture favorite year after year and 283Z was no exception. She would be a great investment in anyone's cow herd. 283Z is entered in the NWSS percentage pen of 3 heifers.

Polled, Black



WILD, WILD WEST BUNCH

THANKS FOR A GREAT SALE!

We extend thanks to all who inquired about our offering.

A special thank you to
those who purchased:

Zach Wilson, WA
Glenn Heisey, MO
Eichacker Simmentals, SD
Rob Krieviel, CO
SS Ranch, WY
Springer's Simmentals, IA
Rains Black Simmental, KS
Malm Ranch, WY
Chad Russell, CO
Forster Farms, NE
Phil Shields/Fairfield Family Farm, IL
Patricia Smith, CO
Gary Greniger, MN
Josef Treu, WI
Triple C Farm, TN

WILD, WILD WEST BUNCH

**Altenburg
Super Bully Ranch**
Willie & Sharon Altenburg
Fruy Collins, Colorado
970-368-7792

Carsten's Simmental
William & Ruth Carsten
Horseshoe, Colorado
970-872-2668

Cow Camp Ranch
Kent, Mark
and Nolan Brunner
Lost Springs, Kansas
785-983-4487

Bridle Bit Simmentals
Eric & Chad
Bauer & Brad Cook
Wald, Colorado
719-324-5542

Campbell Simmental
Robert & Chris Campbell
Ignacio, Colorado
970-563-9020

WILD WILD WEST SIMMENTAL SALE

570 East County Rd 64
Fort Collins, CO 80524

PRE-SORTED
FIRST CLASS
US Postage
PAID
Permit No. 580
Manhattan, KS

First Class

Time Dated Material



Tuesday, January 22, 2013 • 6:30 pm
Adams County Regional Park • Brighton, Colorado

